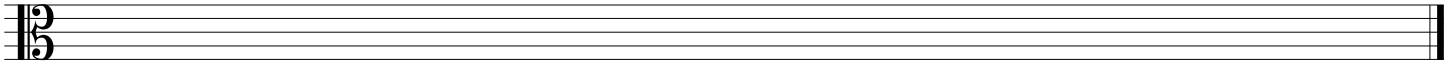


Exam 8

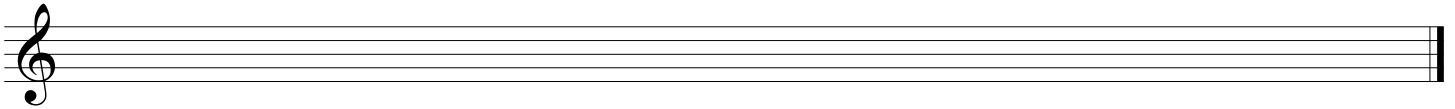
Name: _____

Write the following scales using accidentals (no key signatures), ascending only:

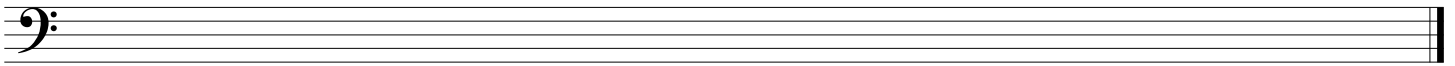
1. Bb Lydian



2. E Minor Pentatonic



3. G Octatonic (start with half step)



4. Notate the 8 mediant triads in relation to the starting triad, placing each in its correct category.

G# Minor Diatonic Chromatic Doubly-chromatic

A musical staff with a treble clef and a key signature of one sharp (F#). The first measure shows a G# minor triad (G#, B, D). The following seven measures are blank, with brackets above them indicating they should be filled with triads categorized as Diatonic, Chromatic, and Doubly-chromatic.

5. Fill in the blank: $T_7 I [2, 6, 8, 9] = [_ , _ , _ , _]$.

6. Find the prime form of: Answer = ()

A musical staff with a treble clef and a bass clef. The treble clef part has a triad of G4, A4, B4. The bass clef part has a single note of G2. The answer is to be written in parentheses.

Given $P_2 =$ A musical staff with a treble clef containing a scale of notes: C4, D4, E4, F#4, G4, A4, Bb4, C5, D5, Eb5, F5, G5.

7. Notate R_5 : A blank musical staff with a treble clef, intended for writing the R5 scale.

8. Notate I_{10} : A blank musical staff with a treble clef, intended for writing the I10 scale.



Extra Credit #2: Draw a picture below about how music will figure into your summer: