

Exam 4

Name: _____

1.) Identify the pop/rock progression type:

a.) G: G Bm C Am D _____

b.) Bb: Gm Eb Bb F _____

c.) Em: Em D C B _____

2.) Write the chords (lead sheet symbols, not Roman numerals) to spell the specified progression:

a.) 50's Doo-wop in D: _____

b.) Singer-Songwriter in F#m: _____

c.) 12-bar Blues in Bb: _____

3.) Harmonize the short figured bass excerpts below in four voices to form the requested melodic keyboard-style voice-leading schema (part-writing pattern) for each. In some cases, the starting soprano note has been added for you. Add Roman numerals below the staves.

a.) Deceptive Motion



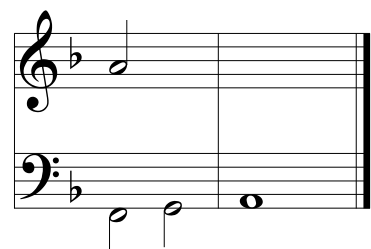
A:

b.) Leaving out the 5th
(incomplete I chord)



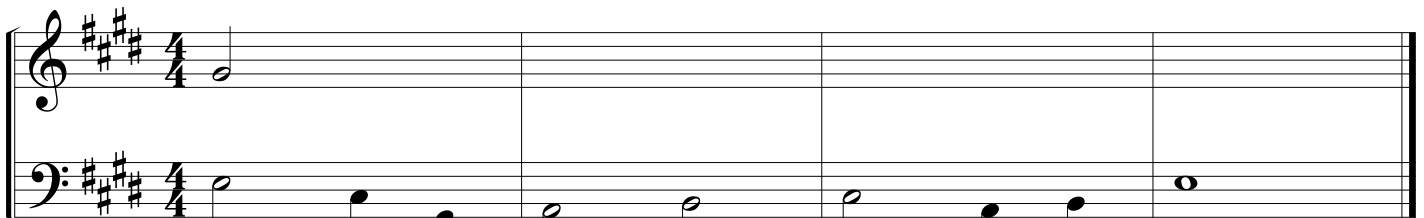
Eb:

c.) Voice Exchange



F: 6 6
5 6

4.) Harmonize the figured bass line below in four voices using melodic keyboard-style voice-leading. Use at least two of the schemata types we've learned this semester, and label each schema you write by name above the staves. Finally, add Roman numerals below the staves.

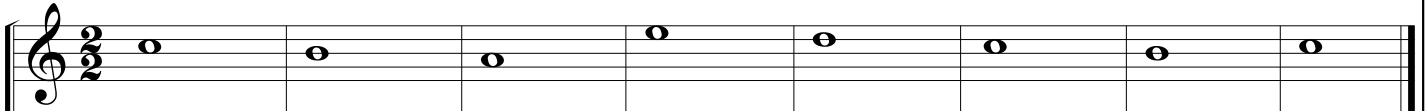


E: 6 6 6 7 7



- 5.) Critique the following third-species counterpoint. Label all generic intervals with numbers between staves. Then, locate and label all errors by voice and measure/beat. Find at least 6 errors.

Cantus Firmus:



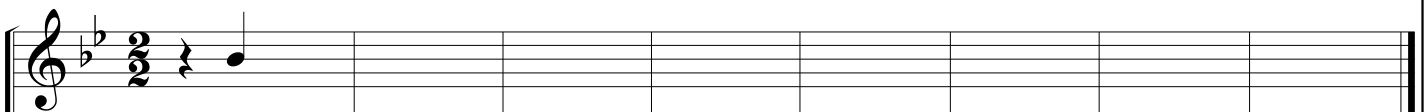
Counterpoint:



List errors:

- 6.) Create a third-species counterpoint against the given cantus firmus. Label all generic intervals with numbers between staves. Include at least three different embellishing tone types, and label every use.

Counterpoint:



Cantus Firmus:

