

# Exam 1

Name: \_\_\_\_\_

1. Identify the key signatures:



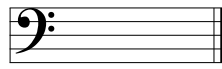
Major: \_\_\_\_\_

Major: \_\_\_\_\_

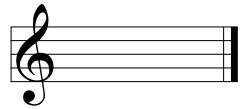
Minor: \_\_\_\_\_

Minor: \_\_\_\_\_

2. Write the key signatures by adding accidentals:

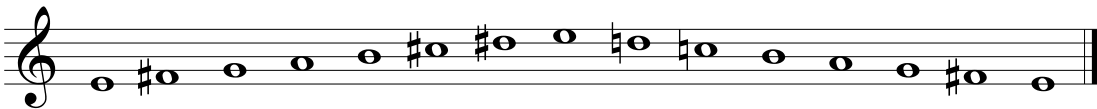


Eb Major



B Minor

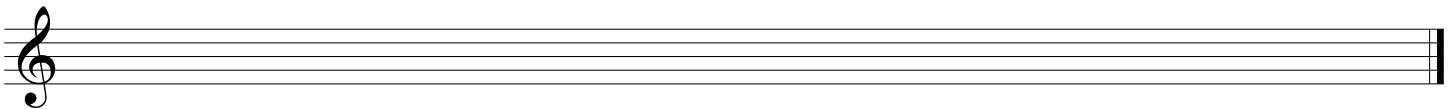
3. Identify the scale by root note and type:



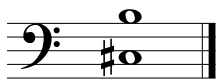
\_\_\_\_\_ (scale)

4. Write the scale, ascending and descending, using accidentals (NOT key signatures):

F Natural Minor



5. Identify the intervals:

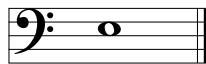


\_\_\_\_\_



\_\_\_\_\_

6. Write the intervals above or below the given pitch:

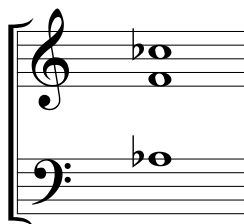


m6 above



P5 below

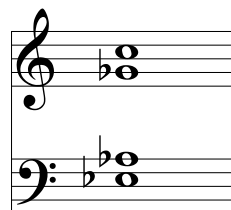
7. Identify the root, quality, and inversion symbol of each chord:



Root: \_\_\_\_\_

Quality: \_\_\_\_\_

Inversion Symbol: \_\_\_\_\_



Root: \_\_\_\_\_

Quality: \_\_\_\_\_

Inversion Symbol: \_\_\_\_\_

(continued on the back)



8. Write a first-species counterpoint against the given cantus firmus. Label generic intervals between the staves.

Intervals:

9. Critique the following second-species counterpoint. For each comment, indicate the voice(s) and measure and beat number(s) to which the error applies. Label generic intervals between the staves.

Intervals:

ERRORS IN SECOND-SPECIES EXAMPLE: (give at least 6 for full credit)

Extra Credit #1: Name one composer of classical ("art") music, and his/her birth year.

---

Extra Credit #2: If you had to vote for one composer for U.S. President in 2016, who would it be and why?

---