

Exam 1

Name: _____

1. Identify the key signatures:



Major: _____

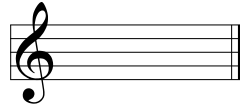
Minor: _____



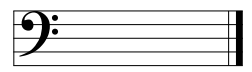
Major: _____

Minor: _____

2. Write the key signatures by adding accidentals:



G Major



F Minor

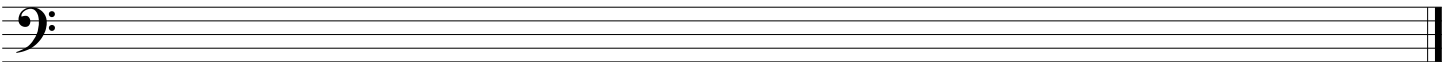
3. Identify the scale by root note and type:



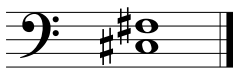
_____ (scale)

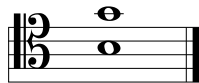
4. Write the scale, ascending and descending, using accidentals (NOT key signatures):

C# Natural Minor

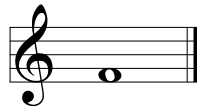


5. Identify the intervals:

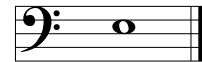




6. Write the intervals above or below the given pitch:

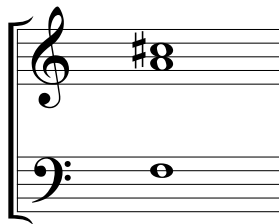


m7 above



m3 below

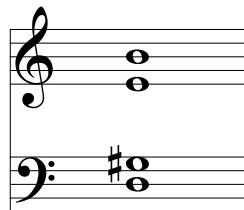
7. Identify the root, quality, and inversion symbol of each chord:



Root: _____

Quality: _____

Inversion Symbol: _____



Root: _____

Quality: _____

Inversion Symbol: _____

(continued on the back)



8. Write a first-species counterpoint against the given cantus firmus. Label generic intervals between the staves.

Intervals:

9. Critique the following second-species counterpoint. For each comment, indicate the voice(s) and measure and beat number(s) to which the error applies. Label generic intervals between the staves.

Intervals:

ERRORS IN SECOND-SPECIES EXAMPLE: (give at least 6 for full credit)