

Let's Learn About Modes!

Example 1: This is similar to C Major, but different:

The Simpsons Theme

Danny Elfman



What pitch is different? **F#**

What scale degree is it in C? **4**

Altered Higher or Lower? **Higher/Raised**

Example 2: This is similar to Ab Major, but different:

Lisbon

English Folk Song



What pitch is different? **Gb**

What scale degree is it in Ab? **7**

Altered Higher or Lower? **Lowered**

Example 3: This is similar to E minor, but different:

Scarborough Fair

English Folk Song



What pitch is different? C#

What scale degree is it in E minor? 6

Altered Higher or Lower? Higher/Raised

Use the answers above to complete this chart:

Exempl e	Similar Scale	Altered Scale Degree	Altered Direction	Mode Name
1	Major	4	Higher/Raised	Lydian
2	Major	7	Lower	Mixolydia n
3	Minor	6	Higher/Raised	Dorian

Major
Minor

N/A
N/A

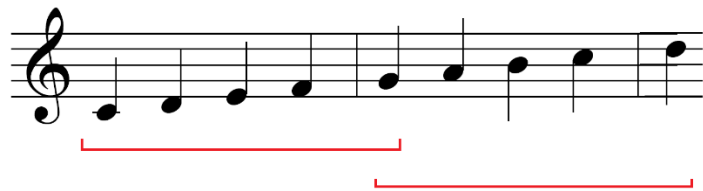
Ionian
Aeolian

Mode Characteristics

Ionian



The Ionian mode (major scale/key) has two tetrachords that sound major, both with leading tones (LT) to the fourth note.



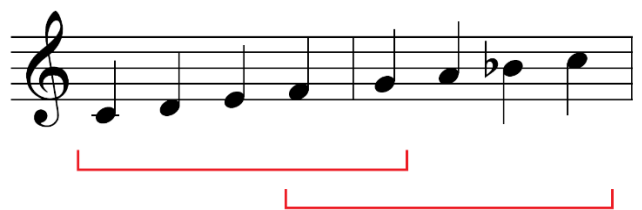
The Ionian mode also has two pentachords that sound major, creating a strong Tonic/Dominant combination.

Lydian



The Lydian mode has LT for both Tonic and Dominant.

Mixolydian



The Mixolydian mode also has two major pentachords (like Major/Ionian), but in different places.

Self-Check (fill in the missing information)

Exercise 1

<u>Tonic/Implied Key</u>	<u>Mode</u>	<u>Altered Note</u>
C Major	Lydian	F# (raised 4th)
F Major	Lydian	B natural (raised 4th)
G Major	Mixolydian	F natural (lowered 7th)
D minor	Dorian	B natural (raised 6th)

Exercise 2

<u>Tonic/Implied Key</u>	<u>Mode</u>	<u>Altered Note</u>
Bb Major	Mixolydian	Ab (lowered 7th)
C minor	Dorian	A natural (raised 6th)
D Major	Lydian	G# (raised 4th)
F Major	Lydian	B natural (raised 4th)
A Major	Mixolydian	G natural (lowered 7th)
E minor	Dorian	C# (raised 6th)