

Simple and Compound Time Signatures: Worksheet 3

I. Below are three sets of paired columns (1-2, 3-4, 5-6). Each cell in columns 1, 3, and 5 contains a simple-meter time signature, and one or more note values, equalling 1, 2, 3, or 4 beats. Each of those is paired with an adjoining cell in compound meter, in columns 2, 4, and 6.

For each compound-meter cell, provide the note values equivalent to the note values in their paired cell. Make sure each pair of measures has the same number of beats. The first example is done for you.

(1)	(2)	(3)	(4)	(5)	(6)
$\frac{2}{4}$ ♩	$\frac{6}{8}$ ♩.	$\frac{2}{4}$ ♩	$\frac{6}{8}$	$\frac{2}{4}$ ♩ ♩	$\frac{6}{8}$
$\frac{3}{4}$ ♩ ♩	$\frac{9}{8}$	$\frac{3}{4}$ ♩ ♩	$\frac{9}{8}$	$\frac{3}{4}$ ♩ ♩ ♩	$\frac{9}{8}$
$\frac{3}{4}$ ♩.	$\frac{9}{8}$				
$\frac{4}{4}$ ♩	$\frac{12}{8}$	$\frac{4}{4}$ ♩ ♩	$\frac{12}{8}$	$\frac{4}{4}$ ♩ ♩ ♩ ♩	$\frac{12}{8}$
$\frac{4}{4}$ ○	$\frac{12}{8}$	$\frac{4}{4}$ ♩ ♩ ♩	$\frac{12}{8}$	$\frac{4}{4}$ ♩ ♩ ♩	$\frac{12}{8}$
$\frac{4}{4}$ ♩. ♩	$\frac{12}{8}$	$\frac{4}{4}$ ♩ ♩.	$\frac{12}{8}$	$\frac{4}{4}$ ♩ ♩ — ♩ ♩	$\frac{12}{8}$

II. Transposing Meters. The example below shows London Bridge written first in 4/4, then transposed to 12/8. Transpose the remaining three melodies as requested.

London Bridge, in 4/4



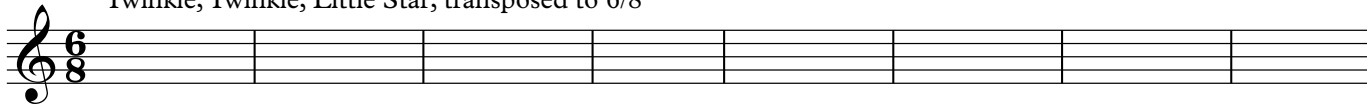
London Bridge, transposed to 12/8



Twinkle, Twinkle, Little Star, in 2/4



Twinkle, Twinkle, Little Star, transposed to 6/8



I Saw Three Ships, in 9/8



I Saw Three Ships, transposed to 3/4



We Three Kings, in 3/4



We Three Kings, transposed to 9/8

