

Example 3: This is similar to E minor, but different:

Scarborough Fair

English Folk Song



What pitch is different? _____

What scale degree is it in E minor? _____

Altered Higher or Lower? _____

Use the answers above to complete this chart:

Example	Similar Scale	Altered Scale Degree	Altered Direction	Mode Name
1	Major			Lydian
2	Major			Mixolydian
3	Minor			Dorian

Major
Minor

N/A

N/A

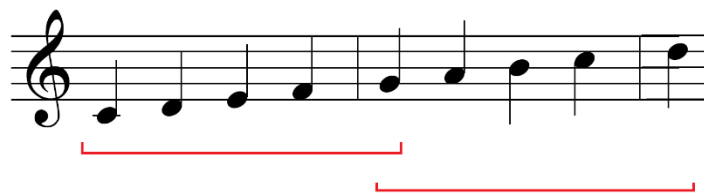
Ionian
Aeolian

Mode Characteristics

Ionian



The Ionian mode (major scale/key) has two tetrachords that sound major, both with leading tones (LT) to the fourth note.



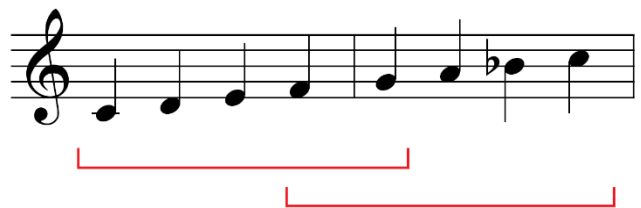
The Ionian mode also has two pentachords that sound major, creating a strong Tonic/Dominant combination.

Lydian



The Lydian mode has LT for both Tonic and Dominant.

Mixolydian



The Mixolydian mode also has two major pentachords (like Major/Ionian), but in different places.

Self-Check (fill in the missing information)

Exercise 1

<u>Tonic/Implied Key</u>	<u>Mode</u>	<u>Altered Note</u>
C Major	Lydian	F# (raised 4th)
F Major	Lydian	_____
G Major	Mixolydian	_____
D minor	Dorian	_____

Exercise 2

<u>Tonic/Implied Key</u>	<u>Mode</u>	<u>Altered Note</u>
Bb Major	Mixolydian	_____
C minor	Dorian	_____
D Major	Lydian	_____
F Major	_____	B natural (raised 4th)
A Major	_____	G natural (lowered 7th)
E minor	_____	C# (raised 6th)